

FROM THE LIBRARY



The Bowdoin College Library Newsletter • Volume 7, Number 2 • December 2002

INSIDE

Facelift
Vesalius
Alert Service
Staff News
NetLibrary
Career Planning
Recorded Books
E-Reserves
Check it Out
Winter Break

EXHIBITIONS

Hawthorne-Longfellow

- *First floor:*
*An Archives Sampler:
Illuminating Bowdoin's
History. Selections from the
George J. Mitchell Depart-
ment of Special Collections
& Archives*
- *Second floor:*
*Old Wine in New Bottles:
Publishing Old Texts in New
Ways. An exhibition
featuring rare books from
the Bowdoin College Library*

The Bowdoin College Library
3000 College Station
Brunswick, Maine 04011-8421
<http://library.bowdoin.edu>

INTELLECTUAL FREEDOM PROJECT

The Library is pleased to announce a gift from two members of Bowdoin's Class of 1947, Corydon B. Dunham and Lewis P. Fickett, Jr., establishing the Intellectual Freedom Project. The project provides funds for the purchase of library materials on intellectual freedom, a topic of special concern at this time in our country's history. In conjunction with this gift, both a book display in the Display Alcove on the first floor and a web site <http://library.bowdoin.edu/intellectual-freedom.shtml> lead to information on the First Amendment of the Constitution, freedom of speech and of the press, and civil liberties.

SAVING TREES

The Library is experimenting with publishing our newsletter only in electronic form to save trees and budget dollars. We would like to hear your comments!

ENDNOTE

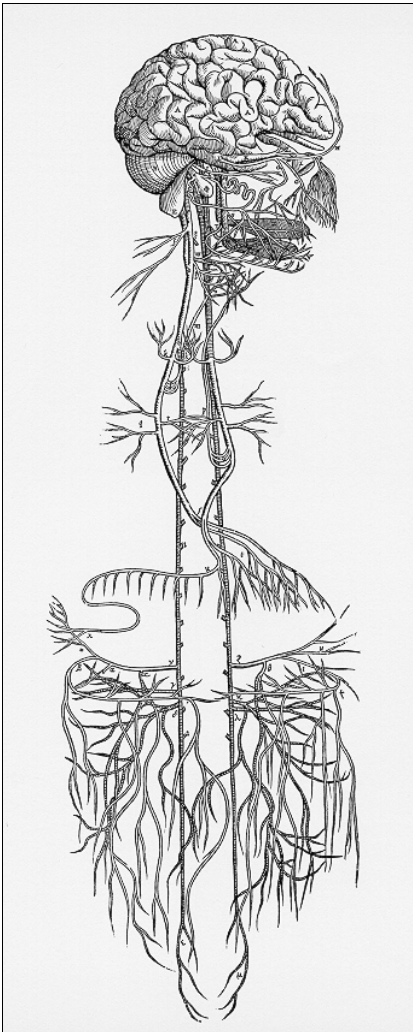
EndNote is a bibliographic management program that maintains a "personal library" of references, citations, and images. It can also import reference information from the Library's catalog and many of its indexes and databases. Citations can be inserted from the EndNote personal library directly into a Microsoft Word document, and a bibliography can then be created. By making it simpler to organize sources, EndNote will support the first-year academic honesty program and assist individual researchers.

Bowdoin's campus-wide site license allows downloading by faculty, staff, and students. Instructions for installation and use can be found at the Educational Technology Center page <http://academic.bowdoin.edu/etc/resources/software/index.shtml/>

Faculty and staff members interested in EndNote instruction should contact Nancy Grant in ETC (X7074, ngrant@bowdoin.edu). Library staff are offering classes for students and would also like to hear from any faculty interested in scheduling training for entire classes. Please contact Mike McDermott (X3856, mmcderm2@bowdoin.edu) for more information.

FACELIFT FOR PIERCE AND COMPUTER LAB

Comfortable, soft seating in the Pierce Reading Room in tones that complement the Howard Warshaw wall mural. Bright new chairs and roomy tables in the computer lab. These, plus new carpeting throughout, have invited increased use of both spaces and brought them to the level of other renovated student study spaces in the Library.



NEW ACQUISITION IN SPECIAL COLLECTIONS

Andreas Vesalius's *Icones Anatomicae* (Munich: Bremmer Presse, 1934). This folio edition, printed from the original wood blocks that were used for Vesalius's monumental 1543 and 1555 editions of *De Humani Corporis Fabrica*, appeared in an edition of 615 copies. Beyond being a seminal work in human anatomy, this printing offers the opportunity to study wood block printing in a quality that exceeds that of the original. The wood blocks, discovered in the University of Munich Library, were destroyed during World War II. This work is currently on display in the *Old Wine in New Bottles* exhibition, 2nd floor, Hawthorne-Longfellow.

On left, Nervous System, Icones Anatomicae

ALERT SERVICE

Now you can receive an automatic e-mail notice when the Library receives a new title by your favorite author or in your current research area. Our new Preferred Search service allows library users to receive e-mail alerts as new materials of interest are acquired. Just create and save a search profile, and lists of newly cataloged titles matching your criteria will be e-mailed weekly. To login to your account, set up a search, or learn more about the service, go to <http://library.bowdoin.edu/cataloging/new/presearches.shtml>. Contact the H-L Reference Desk for more information.

FROM THE
LIBRARY



STAFF NEWS

Please join us in welcoming several new staff members who have joined us in the past few months. **Sara Amato** has returned to full-time status as Electronic Services/Web Development Librarian. **Kathy Adams**, Assistant Catalog Librarian, comes to Bowdoin from a reference position at the Los Angeles Public Library. **Dianne Lathan** is the new Library Secretary and comes here after several years in administrative support at Bath Iron Works. **Bridget Spaeth**, Access Services Assistant, majored in Art History and Visual Arts at Bowdoin, graduating in 1986. In January, **Carr Ross** will become the new Reference Librarian; Carr is currently Research and Instruction/Government Information Librarian at the University of Southern Maine.

NETLIBRARY

Over 4400 Netlibrary e-books accessible to Bowdoin users are now fully catalogued. This collection of electronic resources includes scholarly as well as popular titles in all subjects, from aikido to Zora Neale Hurston. Using these e-books requires setting up a free account with Netlibrary; for more information go to the Library website and click on "Finding E-books". For a list of Netlibrary e-books by title, search the catalog by Author for "Netlibrary" or point your browser to <http://phebe.bowdoin.edu/search/a?netlibrary>.

CAREER PLANNING CENTER MATERIAL

The Library catalog now includes information regarding more than 1100 monographs and serials held at the Career Planning Center (located on the first floor of the Moulton Union). This collection is available to members of the Bowdoin community only. It includes books on career exploration and decision-making, directories of internship opportunities and graduate/professional schools, test-taking and preparation manuals, as well as guidebooks to career information by academic discipline. To retrieve a list of Career Planning Center materials subdivided by broad topical category, search by Alternate Call Number for "CPC" or point your browser to <http://phebe.bowdoin.edu/search/I?CPC>.

RECORDED BOOKS ON CDROM

The Library's Audiobook Collection now includes CDROM as well as audiotape recordings. Recent CDROM titles include John Adams (David McCullough), The Bone-setter's Daughter (Amy Tan), and Tishomingo Blues (Elmore Leonard). A subject search of "audiobooks" will retrieve a list of all our holdings; the records for individual titles will indicate whether they are audiotapes or CDROM. Note: Adaptors are now available that allow portable CD players to run through your car's stereo system.



E-RESERVES

During Spring Semester, 2002, 46 classes used 596 e-reserve items. In Fall, 2002, we have 85 classes using 1605 e-reserves! Thanks to faculty and academic coordinators who scanned their own e-reserves. Early submissions for next semester are greatly appreciated. For more information, go to <http://library.bowdoin.edu/circ/ereserve.shtm/>

CHECK IT OUT!

The H-L Circulation Desk now offers these additional materials for use by Bowdoin faculty, staff, and students:

- Portable cassette tape players (2 hr borrowing period; in-house use)
- Portable CD players (2 hr borrowing period; in-house use)
- Laptop computers (3 hr borrowing period; in-house use; also available at Hatch Science Library)
- Wireless cards for laptop computers (5 hr borrowing period; may be used outside the Library; also available at Hatch Science Library)
- Ethernet cables for laptop computers (5 hr borrowing period; may be used outside the Library)

All of these items may be renewed once.

WINTER BREAK IN LIBRARY

Break is always a busy time in the library. We have several projects slated for this year:

- Installation of new carpet in the Abrahamson Room (6th floor Hubbard Hall) and under computer stations on first floor, H-L
- Expansion of wireless network and increase in wired ports to student study spaces in basement of Hatch Science Library
- Replacement of the Phebe (Library catalog) server on January 13-14
- Introduction of pilot music e-reserve service for the spring semester
- Installation of a new card system for use with the Library copiers and microform reader/printers

